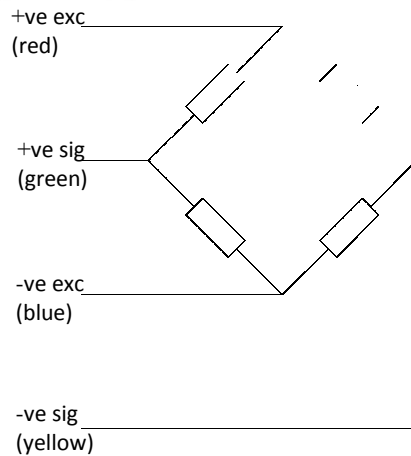


ET Telemetry Series

Underhook/Inline Load Link



- Range 1 to 500 tonne
- For use with standard shackles
- Sealed to IP67
- Range 200m
- Up to 255 Links can be used in one installation
- Auto Power Down

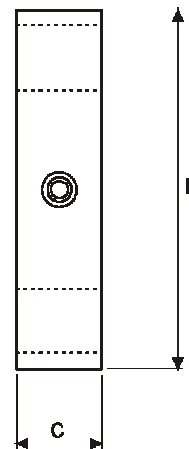
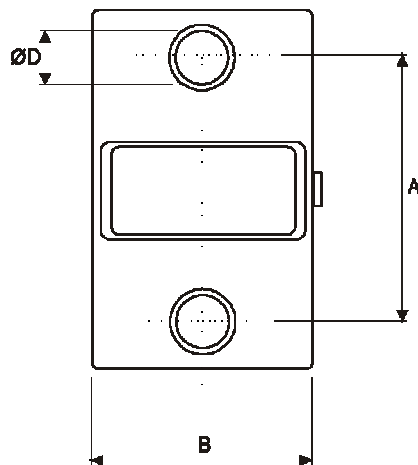


Options :
 Other ranges available on request
 Wireless Handheld unit
 Carry case for transportation and storage of link and handheld

Capacities	1, 2, 5, 12, 25, 35, 50, 100, 250, 500	tonne
Full Load Output	1.5 (±0.25%)	mV/V
Zero Load Output	<±2.0	%
Excitation (Max)	7.2	V
Accuracy	<0.1	%
Repeatability	<0.05	%
Battery Life	150 (lithium)	Hrs
Auto power down	9	Hrs
Compensated Temp. Range	-10 to +40	°C
Operating Temp. Range	-20 to +60	°C
Temp. Coefficient on Zero	<0.0010	% Capacity/°C
Temp Coefficient on Span	<0.0010	% Capacity/°C
Safe Overload	150	%
Insulation	>500 @100Vdc	MΩ
Environmental Protection	IP66	

Specifications subject to change without notice

Type	A	B	C	D	E	WEIGHT (kg)
1, 2, 5 te	108	105	40	30	164	1.4
12 te	120	105	40	38	210	1.9
25 te	131	125	55	53	255	4
35 te	147	135	55	60	305	5
50 te	170	150	75	73	345	9
100 te	228	220	123	100	455	27
250 te	330	304	189	145	680	87
500 te	451	500	200	200	1015	225



All dimensions in mm