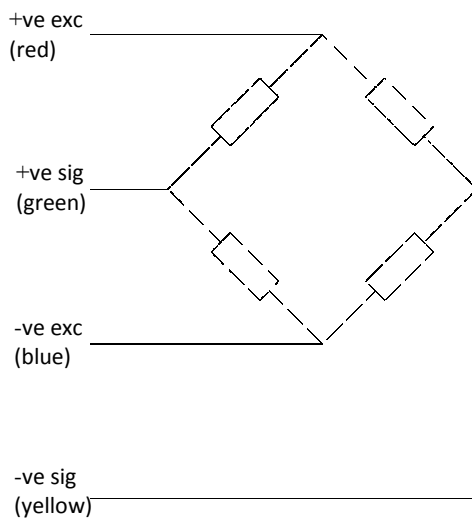


ET Stainless Series

Fully Welded Underhook / Inline Load Link

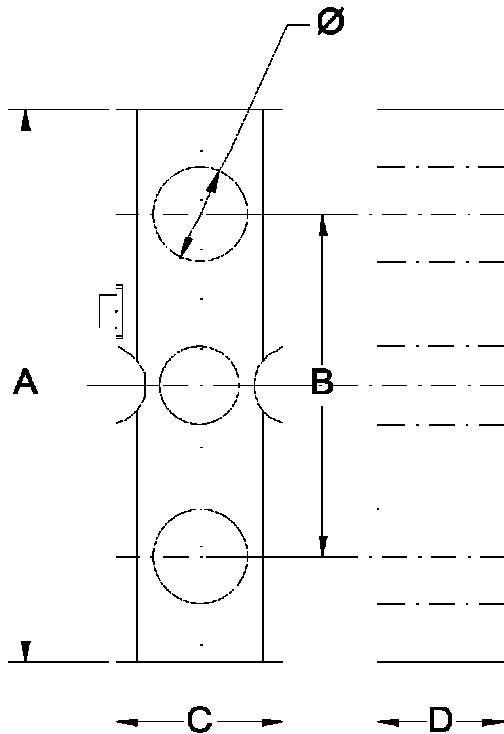


- Range 5 to 10 tonne
- Fully welded
- For use with standard shackle
- Robust stainless steel construction
- Sealed to IP68



Capacities	5, 10, 15, 20, 25, 30, 50, 75, 100	tonne
Full Load Output	1 (nominal)	mV/V
Zero Load Output	<±2.0	%
Excitation (Max)	10 (15)	V
Accuracy	±0.1	% of reading
Input Resistance	375 (±20)	Ω
Output Resistance	350 (±2)	Ω
Compensated Temp. Range	-10 to +40	°C
Operating Temp. Range	-20 to +60	°C
Temp. Coefficient on Zero	<0.005	% FRO/°C
Temp Coefficient on Span	<0.003	% FRO/°C
Safe Overload	150	%
Ultimate Overload	400	%
Insulation	>500 @100Vdc	MΩ
Environmental Protection	IP68	
Cable Length	10	m

Specifications subject to change without notice



Capacity (te)	Weight (Kg)	A	B	C	D	Dia.
5	2	150	85	50	32	26
10	4	210	130	63	48	36
15	7	240	150	76	57	43
20	11	270	170	95	70	53
25	13	270	170	101	70	53
30	16	300	190	114	78	60
50	23	350	220	127	100	72
75	38	400	231	152	110	86
100	59	460	275	175	120	100

All dimensions in mm

Options :

- Higher ranges available on request
- Plug / Socket breakdown at link
- Second redundancy gauge bridge
- Internal signal amplifier - 2 or 3 wire
- Witness by Lloyds Reg. Of Shipping, ABS etc.
- Submersible option available with waterproof connector