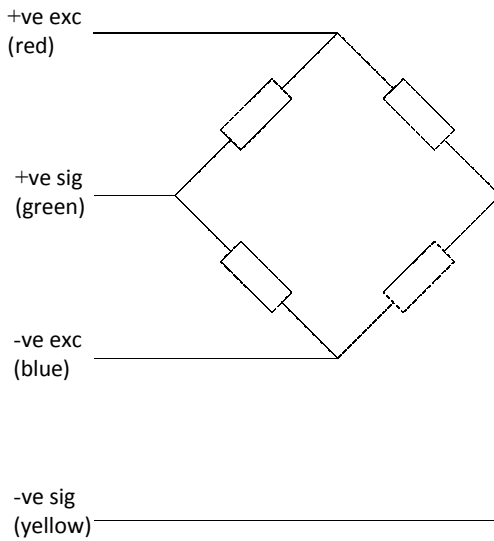


Load Pin Series

Double shear pins



- Range 0.1 to 1000 tonne
- Externally or internally strain gauged
- Sealed to IP67
- ATEX certification available
- A variety of cable and connector options
- No change to existing structure required

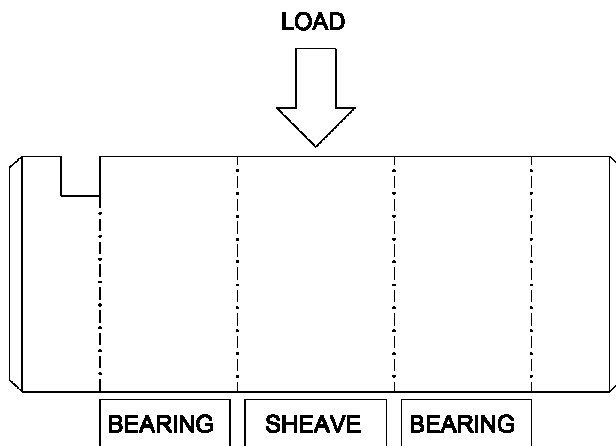


Capacities	0.1 to 1000+	tonne
Proof Load	150	% of rated load
Ultimate breaking load	500	% of rated load
Bridge Resistance	350/700/1000	ohms
Excitation	5 to 10	Volts (dc)
Output	1.0 to 1.5	mV/V
Non-Linearity	±1%	typical
Non-Repeatability	±0.04%	optimum
Environmental	IP67	
Compensated Temp. Range	-10 to +40	°C
Operating Temp. Range	-20 to +60	°C
Temp. Coefficient on Zero	<0.02	% Capacity/°C
Temp Coefficient on Span	<0.02	% Capacity/°C
Cable Length	4	m

Specifications subject to change without notice

Product Description

Load measuring pins are designed for many diverse applications as direct replacements for clevis or pivot pins. They have many advantages over other load sensors in that they do not normally require any change to the mechanical structure being monitored. Load pins are typically used in rope, chain and brake anchors, sheaves, shackles, bearing blocks and pivots.



Options :

- Special anti-rotation / locking plates
- Internal greaseways
- Plug / Socket breakdown at pin
- Second redundancy gauge bridge
- Internal signal amplifier
- Witness by Lloyds Reg. Of Shipping, ABS etc.
- Single shear pins

DELTA
ATEX / IECEx Approved to
Ex ia IIC T6
Ex tD A20 IP68 T85C

